

Using BOSS TONE STUDIO for ME-90B

© 2024 Roland Corporation

01

To begin, connect BOSS TONE STUDIO to the ME-90B unit.

For details on how to connect, refer to the ME-90B Reference Manual (BOSS website).

- * To use BOSS TONE STUDIO, you must update the ME-90B to version 1.03 or later.

https://roland.cm/me-90b_dl

How to change the values



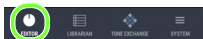
Slide up or down to edit a parameter.

Long-press to enter a numeric value or choose from a list.

EDITOR screen	4
EDI TOR basic screen	4
EFFECT EDIT screen	6
CTL SETTING screen	7
Saving an edited effect in the ME-90B unit (WRITE)	9
LIBRARIAN screen	10
LIVESET LIST	10
MEMORY LIST	12
Importing memories from the ME-90B into LIBRARIAN (IMPORT FROM ME-90B)	13
Exporting a LIBRARIAN liveset into the ME-90B (Export to ME-90B)	15
Exporting a liveset from LIBRARIAN to the mobile device (EXPORT TO FILE).....	17
Importing a file from the mobile device into LIBRARIAN (IMPORT FROM FILE).....	18
Exporting a liveset from LIBRARIAN to a cloud service (EXPORT TO CLOUD)	19
Importing a file from a cloud service into LIBRARIAN (IMPORT FROM CLOUD).....	21
What you can do with BOSS TONE EXCHANGE..	22
SYSTEM	24
HARDWARE SETTING	24
PLAY OPTION	24

SEND/RETURN SETTING.....	24
OUTPUT SETTING	25
USB SETTING	25
OWNER'S MANUAL	25
BLUETOOTH SETTING	25
SHOW BLUETOOTH SETUP SCREEN	26
VERSION	27

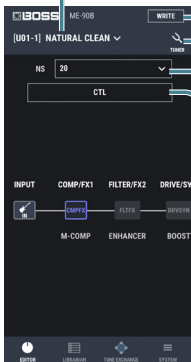
EDITOR screen



EDI TOR basic screen

Shows the currently selected memory. Tap this to switch memories.

You can save the effects you edit to the ME-90B.

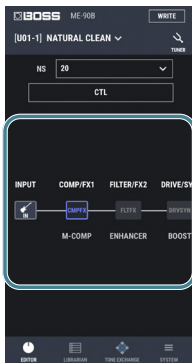


This launches the tuner.

Use this to set the noise suppressor.

Jumps to the CTL settings screen (p. 7).

EDITOR basic screen (cont.)

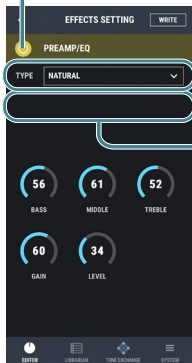


Slide this control from left to right to see the connections and status of all effects.

Tap an effect block to turn it on/off. Long-press to switch to the detailed edit screen for the effect.

EFFECT EDIT screen

Tap to switch the effect on/off.



Tap to show a list of effect types that you can switch between.

Choose "SELECTABLE" to exchange (swap) effects that can be used by operating the ME-90B.

CTL SETTING screen

You can configure the CTL pedal settings.

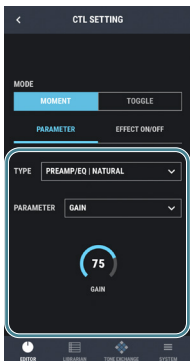


Sets the pedal operation that enables the effect. When you select TOGGLE, you can set the on/off state.

Selects whether to set a specific parameter, or to set whether effects are to be turned on/off.

When you select EFFECT ON/OFF, this sets the effects you want to turn on/off.

CTL SETTING screen (cont.)



If you select PARAMETER, select the effect type and parameter and set the value used when the effect is enabled.

Saving an edited effect in the ME-90B unit (WRITE)

1. Tap the [WRITE] button.



2. Select the save destination, enter a memory name, and tap the [WRITE] button.

- * When you save the edited data, it overwrites the memory on the ME-90B. The previous settings cannot be recovered. Select a memory that you don't mind overwriting.

LIBRARIAN screen



LIVESET LIST

Tap the [LIBRARIAN] button to display the liveset list.

There can be a maximum of 50 livesets.

Creates a new liveset.

Imports a liveset.

Exports a liveset.

Copies or deletes a liveset.

Tap to edit the name of the liveset.

Tap to see a list of the memories (p. 12) in the liveset that you tapped.

The screenshot shows the BOSS ME-90B interface. At the top, there is a 'BOSS ME-90B' header and a 'LIBRARIAN' button. Below the header, there is a '+ CREATE LIVESET' button and an 'EDIT' dropdown menu. The main area displays a list of livesets: 'ME-90B USER MEMORY DATA', 'LIVESET 1', 'LIVESET 2', 'LIVESET 3', and 'LIVESET 4'. Each liveset entry has a '36' next to it and a right-pointing arrow. A vertical menu icon is visible next to each liveset entry. At the bottom, there is a navigation bar with 'EDITOR' and 'LIBRARIAN' buttons.

LIVESET 1

36



Shows how many memories are in the liveset.

LIVESET 1

36



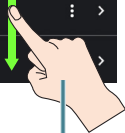
LIVESET 2

36



LIVESET 3

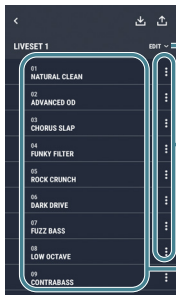
36



Drag to change the order.

MEMORY LIST

Up to 36 memories can be placed in one liveset.



Memories can be copied or deleted.

Tap to edit the name of a memory.

Tap to switch to the sound of the memory you tapped, letting you preview it.




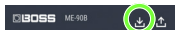
Drag to change the order.

Importing memories from the ME-90B into LIBRARIAN (IMPORT FROM ME-90B)

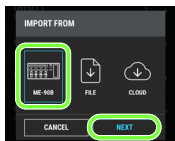
Here's how you can import all of the ME-90B's user memories into the LIBRARIAN.

1. Tap the [LIBRARIAN] button.

2. Tap the  button in the upper part of the screen.

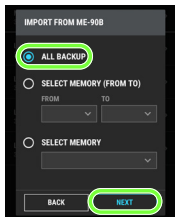


3. Tap "ME-90B", and then tap the [NEXT] button.



4. Tap "ALL BACKUP", and then tap the [NEXT] button.

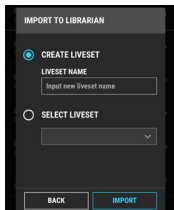
* "ALL BACKUP" saves all memories as a liveset.



- * "SELECT MEMORY (FROM TO)" saves the memories between "FROM" and "TO" as a liveset.
- * "SELECT MEMORY" saves only the selected memory as a liveset.
- * When using settings such as "ALL BACKUP", it may take some time to import a large number of memories into LIBRARIAN. To import only a small number of memories into LIBRARIAN, use SELECT MEMORY (FROM TO) and SELECT MEMORY.

When creating a new liveset

5. Select "CREATE LIVESET", enter a name in LIVESET NAME, and tap the [IMPORT] button.



When adding to an existing liveset


5. Tap "SELECT LIVESET", select the liveset to which you want to add, and tap the [IMPORT] button.

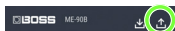
Exporting a LIBRARIAN liveset into the ME-90B (Export to ME-90B)

Here's how a saved liveset can be exported to memories in the ME-90B unit.

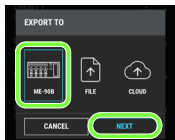
* Memories exceeding 36 are not restored.

1. Tap the [LIBRARIAN] button.

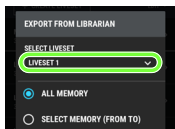
2. Tap the  button in the upper part of the screen.



3. Tap "ME-90B", and then tap the [NEXT] button.

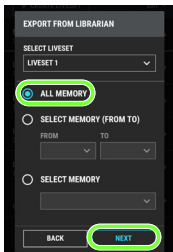


4. Select the liveset that you want to export.



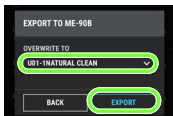
5. In the liveset area, tap “ALL MEMORY”, then tap the [NEXT] button.

- * “ALL MEMORY” exports all memories of the liveset to the ME-90B unit.
- * “SELECT MEMORY (FROM TO)” exports the memories between “FROM” and “TO” to the ME-90B unit.
- * “SELECT MEMORY” exports the selected memory to the ME-90B unit.



6. Select the memory at which you want to start overwriting the data in the ME-90B unit, and tap the [EXPORT] button.


- * If you’re exporting many memories to the ME-90B, it may take a while. To export a small number of memories to the ME-90B, use “SELECT MEMORY (FROM TO)” or “SELECT MEMORY”.



Exporting a liveset from LIBRARIAN to the mobile device (EXPORT TO FILE)

Here's how a liveset from LIBRARIAN can be converted into a liveset file and exported to a mobile device.

1. Tap the [LIBRARIAN] button.

2. Tap the  button in the upper part of the screen.



3. Tap "FILE", and then tap the [NEXT] button.




4. Select the liveset you want to export, and tap the [EXPORT] button.

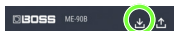
5. The data is exported to the mobile device.

Importing a file from the mobile device into LIBRARIAN (IMPORT FROM FILE)

Here's how a liveset file previously exported to the mobile device can be imported into LIBRARIAN.

1. Tap the [LIBRARIAN] button.

2. Tap the  button in the upper part of the screen.



3. Tap "FILE", and then tap the [NEXT] button.




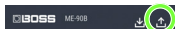
4. Select a liveset file that was exported to the mobile device.

Exporting a liveset from LIBRARIAN to a cloud service (EXPORT TO CLOUD)

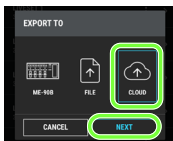
Here's how a liveset from LIBRARIAN can be converted to a liveset file and exported to a cloud service.

1. Tap the [LIBRARIAN] button.

2. Tap the  button in the upper part of the screen.



3. Tap "CLOUD", and then tap the [NEXT] button.



4. Select the liveset that you want to save to the cloud service, and tap the [EXPORT] button.

5. The Cloud screen appears, where you can export the file.

Choose "iCloud Drive" for an iOS device, or "Google Drive" for an Android device.


In some cases, your mobile device might support more than one cloud service.

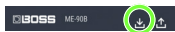
This app only supports operation using iCloud Drive on iOS devices and Google Drive on Android devices.

Importing a file from a cloud service into LIBRARIAN (IMPORT FROM CLOUD)

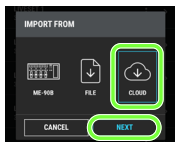
Here's how a liveset file previously exported to a cloud service can be imported into LIBRARIAN.

1. Tap the [LIBRARIAN] button.

2. Tap the  button in the upper part of the screen.



3. Tap "CLOUD", and then tap the [NEXT] button.



4. Select a liveset file that was saved in the cloud.

What you can do with BOSS TONE EXCHANGE



BOSS TONE EXCHANGE (hereafter “TONE EXCHANGE”) is a service that lets you share the livesets you’ve created using TONE STUDIO with users around the world.

Here’s what you can do with TONE EXCHANGE.

- * Upload and share your livesets on TONE EXCHANGE.
- * Download your favorite livesets from those created by BOSS users around the world.

MEMO

You must sign in with your Roland account to use TONE EXCHANGE.

To make use of all the TONE EXCHANGE functions, access the TONE EXCHANGE website as shown below.

<https://bosstoneexchange.com/>

When you access TONE EXCHANGE from the TONE STUDIO app, you can only download livesets currently offered by BOSS.

We plan to update the app to let you upload and download livesets created by users.

SYSTEM



HARDWARE SETTING

Here you can configure the knob motions and LED colors.

PLAY OPTION

Here you can configure what happens when you switch between banks, whether to carry over the effect sound or not, what happens when you switch to manual mode, and the functions of the REV footswitch.

SEND/RETURN SETTING

Lets you set the insertion point for SEND/RETURN.

OUTPUT SETTING

This lets you configure the guitar amp that's connected to the OUTPUT jacks (OUTPUT SELECT).

- * You can set this when the [AMP/LINE] switch is set to "AMP".

USB SETTING

Configures the USB LEVEL, MIDI channel and USB LOOPBACK.

OWNER'S MANUAL

Here you can view the Owner's Manual for the ME-90B, and view the pages of this manual.

- * An Internet connection is required to use this feature.

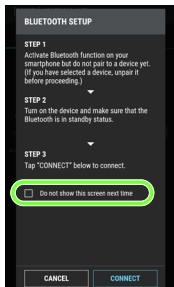
BLUETOOTH SETTING

Here you can edit the Bluetooth connection settings.

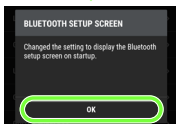
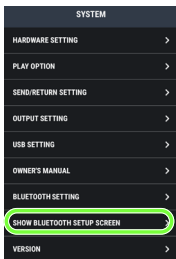
SHOW BLUETOOTH SETUP SCREEN

When the app launches, the BLUETOOTH SETUP screen appears.

Select the “Do not show this screen next time” check box if you don’t want the BLUETOOTH SETUP screen to be shown from the next time you launch the app.



If you want the BLUETOOTH SETUP screen to be shown again when the app launches, tap “SHOW BLUETOOTH SETUP SCREEN” on the SYSTEM screen and then tap the [OK] button.



VERSION

Here you can view the software version and license information for BOSS TONE STUDIO for ME-90B.